

**Before using GIANI™**  
Prepare surface and tape off before starting your GIANI™ granite fun! . . .



No sanding required. Simply use household scouring pads – such as SOS® or Brillo® to remove all grease, wax and dirt - Do not use any other cleaners - Rinse with water and cloth at least twice - to remove all cleaner residue –



Use 3M® Painter's Tape for "Delicate Surfaces" to stop bleed through on walls and cabinets  
Tape two rows high above back splash to protect



Patch deep nicks & seams with wood patch. Sand the patch smooth  
GIANI™ will cover thin scratches



Remove any loose caulk - or any silicone caulk - and replace with paintable caulk

## Step 1



**Roll on Primer**

Note - apply Primer in small, three foot sections so the sections are still wet when they overlap - First, shake and stir the can well. Next, use the foam brush to paint a narrow, half-inch wide strip at the top and bottom of the backsplash - Now, use the roller to apply a thin coat of Primer to countertop. Immediately "back roll" the entire section you just painted - once or twice - because this minimizes any lap lines created by the roller so they don't show through your granite. To "back roll" - simply roll back over the section with light, slow, end-to-end rolls. Next, roll the primer onto your backsplash without re-wetting the roller because it ensures a thin coat. Now, move onto the next section so their overlap blends together while they're wet. Clean foam brush after using and throw away the used roller

## Step 2



**Sponge on Minerals**

Note - after Primer coat dries for eight hours – practice the upcoming fun Mineral step on your included Practice Poster Board! To apply Minerals, lightly sponge on all the Minerals in two foot sections - This allows your colors to mix while wet  
Sponge lightly because you can always go back and add more color – even after the colors dry! - "Color on top of color adds depth!" – Apply colors in order Use final Mineral color lightly – because a little goes a long way  
Sponge very lightly on backsplash and edges to prevent runs. After Minerals have dried for a minimum of

## Step 3



**Roll on Clear Topcoat**

Watch the "Topcoating Tips" on the included Demo DVD - because a countertop application requires a little different technique than wall painting. To begin - use the foam brush and apply a narrow strip of Topcoat at the top and bottom of your backsplash in a section that's about three feet wide. Next, use the roller and apply a very thin coat to your backsplash face in the section. Make sure it's very thin so it doesn't run. Next, apply the topcoat to the top of your countertop in the section. Be sure to keep your roller wet – if it starts sounding dry, then re-wet it. Immediately after covering the countertop section, place your roller at one end of the section – and lightly roll across it - all the way to other end – using one long, end-to-end roll stroke.

four hours,  
Sand down any sharp peaks created by sponging. See "sanding" option -

Note - if you have a "water-fall" or sloping edge, then you may continue your roll stroke right over - and off the sloped edge - Next, repeat these single back rolls over entire section Once you 'back roll' the section – do not re-roll that section again because it may create dry spots.

Immediately after finishing the section - move onto the next section so the overlap between your sections blend together while they're wet. Clean roller pad and dry. Wait 4 hours, apply 2<sup>nd</sup> coat. 3 coats - maximum. See more tips on topcoating on Page 3

### What You Can Paint . . .

1. Giani™ is designed to turn laminate, Formica®, Corian®, cultured marble, ceramic tile and wood – into the beauty of granite! - Not for sinks, tubs, flooring or shower floors.
2. Cultured marble, ceramic tile, Corian®, plastics and wood must be pre-primed before applying the Giani™ Primer - Use a primer that's appropriate for your surface. Apply the pre-primer with a foam roller for ultra smooth finishes.
3. Corian® must also be lightly sanded first with a very fine #600 grit sand paper

**Drying Times . . .** Note – all application times are minimums - you may wait longer . . .

1. Roll on one thin coat of Primer, then wait . . . . . 8 hours
2. Lightly sponge on all Minerals, then wait . . . . . 4 hours
3. Roll on first Clear Topcoat, then wait . . . . . 4 hours
4. Roll on your final Topcoat., then wait . . .
  - 1 hour and carefully remove tape - be sure to score the tape's edge while pulling it up
  - 12 hours and apply clear acrylic caulk around sink's rim to seal out water
  - one day before using your countertops and dishwasher
  - three days before setting small appliances back on your countertops

**IMPORTANT – Giani™ Granite cures in 14 days at 77° F and 50% relative humidity - Lower temperatures and higher humidity will extend the drying time - TIP – avoid standing water on your countertops - especially for the first thirty days –**

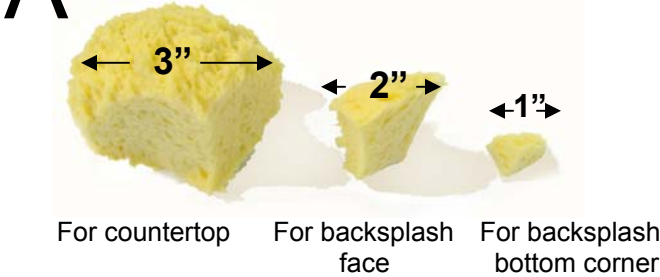
**Cleaning . . .** NEVER use harsh chemicals such as bleach or any abrasives such as Comet® or Soft Scrub®. Never use scratchy pads. ONLY use mild dish soap and water - or Giani™ Cleaner. If food gets stuck on, lay warm wet cloth on it for few minutes and remove with cloth. ALWAYS use cutting board.. . BE SURE to use a hot pad under your coffee pot or crock pot.

- Cans are not filled to top because standardized cans are used. Adequate volumes are provided to complete 35 SQ.FT.
- You may lightly sand after your Mineral application and your first Topcoat to optimize smoothness. Use a #600 grit sand paper and wipe up dust. See more details on Page 4 –
- The Giani™ IronCore Primer will turn from a dark grey color to a jet black after the Clear Topcoat is applied.
- For tips on applying the Topcoat to a large peninsula or island – see Page 3 or watch “Topcoating Tips” video on DVD.
- See “COLD WEATHER ALERT” when applying Giani™ in the winter time on Page 4
- Need any assistance? Call 800-650-5699 M-F 7:00 am – 4 pm CST or 636-751-9836 for after hours and weekends

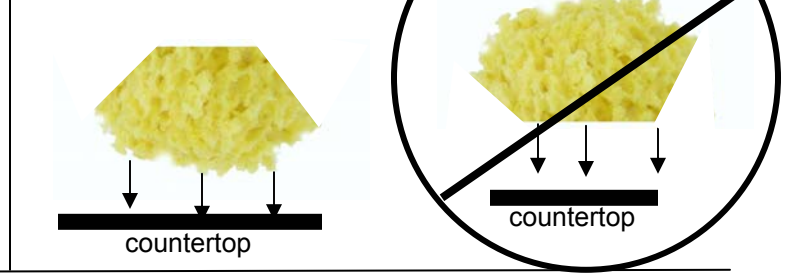
Share your GIANI™ granite creations with us at [info@GIANIgranite.com](mailto:info@GIANIgranite.com) and enjoy the beauty you and GIANI™ create in your home! . . .



## A “Cut sponge into wedge sections . . . Shake out any particles, rinse and dry out.”



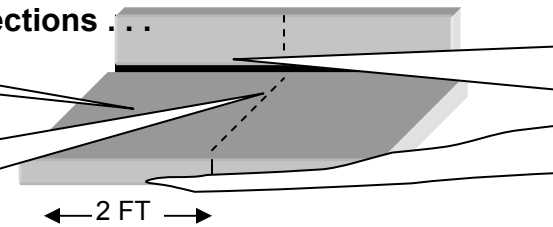
## B “Blot with the ‘spiny side . . .”



## C “Sponge on in two foot sections . . .”

A. Start on countertop

B. Then paint bottom of backsplash. Use “Pencil Tip” below or ½” thick artist brush



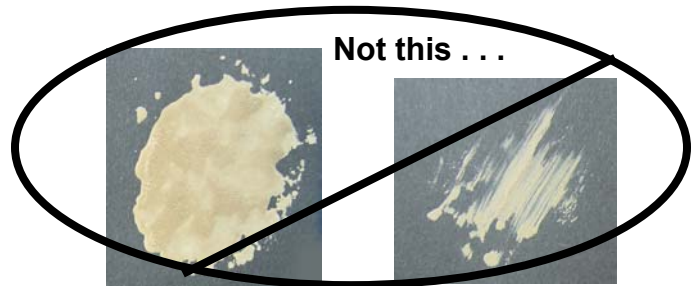
C. Finish up with backsplash face and countertop edge

Note – sponge very lightly on these faces to prevent runs

**TIP** – “Stick the tip of a pencil into a tiny, one inch piece of sponge and use it to tap all the Minerals into the bottom corner of your backsplash”.

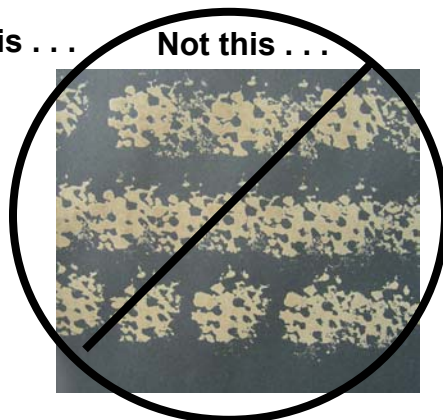
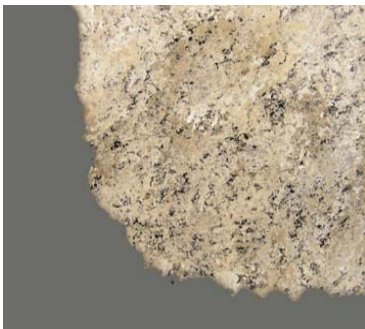


## D “Tap the sponge onto your countertop like this . . .”



Note – light and thin taps are best – because it’s easy to go back in and add more. Practice your style on the Practice Board.

## E “Apply in sections like this . . . Not this . . .”



- Apply all three minerals in each two foot section -
- Build “depth” by going back in and adding light accents after your first application of Minerals have dried -

- The final Mineral –Step #4 - goes a long way – so use sparingly and blend in -
- **Special Note - for Bombay Black™ Granite -** You may wish to add the Step #3 Black Onyx Mineral after the Step #2 Pearl Mica has dried - because it will create a deeper black granite -  
- You may also find that it’s optimal to add the Bronze Mineral after the other colors have dried because it intensifies the Bronze.
- **For veining** - you may find that it’s optimal to lightly paint in veins with very thin artist brush -  
Use a color that will create some contrast with your granite. Apply the veins while the other Minerals are still wet so they blend in.

## “How To Achieve the Optimal Topcoat Finish on a Big Kitchen Island!”...

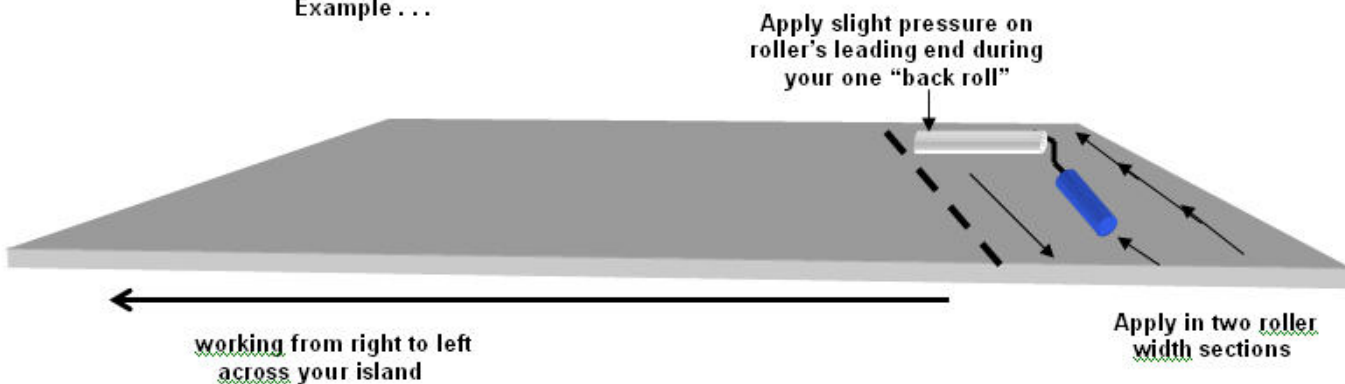
GIANI's Clear Topcoat is an automotive grade, water-based, Polyurethane that's engineered to provide a hard protective shell over the beautiful granite you have just created! -

The Polyurethane is designed to flow and dry quickly to prevent hair and dust particles from sticking while it's drying - As a result here's a few tips on how to get optimal coverage on a big kitchen island or a long peninsula -

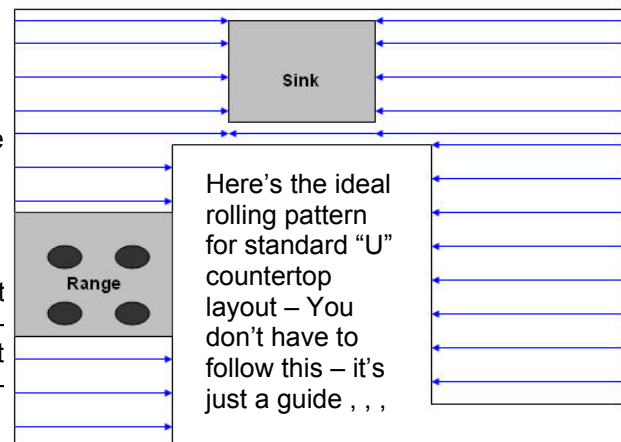
Note – you may also view a Demonstration Video dedicated specifically to top coating a big island labeled “Topcoating Tips” on the included Demo DVD

1. Turn off any ceiling fans or window fans in the area while you're applying the Topcoat – and keep them turned off for at least an hour after you've finished - because this will allow the Topcoat to flow and dry at it's normal pace - Also close any window shades or blinds if sun rays are directly contacting the countertop surface -
2. Work efficiently – don't break for a few minutes in the middle of top coating an island - because you want each overlapping row to be wet and blend with the previous row –
3. Always keep your roller wet. - don't let it get dry. You'll need to continuously re-wet your roller in your roller tray. As soon as it start's making an “sssssss” sound while you're rolling it, then that's indicating its getting too dry – and you'll need to re-wet your roller in the tray. The rolling process should almost be soundless.
4. To begin, roll on one very light coat of topcoat - onto your island's edges first.
5. Next, move onto your island, and apply the topcoat in narrow sections that are about the width of two rollers –
6. After you coat each narrow section – place your roller at the far end of the section - and lightly “back roll”– in one, long roll. – Then - lift the roller - and repeat this in the next row.
7. While you're “back rolling” - apply a little extra pressure on the “leading end” of your roller because it will inherently reduce the pressure on the lagging end that's in the wet coating – reducing the roller wake –
8. Note – any small wakes created by the roller are likely to flow out and dry down smooth as the coating dries -

Example . . .



8. Immediately after you've finished topcoating the island's top – roll back over its side edges – all the way around the island - because this will prevent any runs which may have occurred when rolling the top. Use very light roll strokes with an almost dry roller on the edges because this will prevent any build-up back on the top -
9. Note - if you do experience a roller wake mark on the top that doesn't dry down – or a dry, dull spot - no problem – let the topcoat dry for eight hours and simply use a very fine #600 grit sand paper - and smooth that area down per the sanding instructions on the next page. Then, re-topcoat the entire island following the above steps -



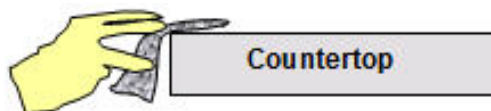
## **Optional - How to Sand After Your Minerals or first Topcoat . . .**

“The GIANI™ granite process will inherently create a granite finish with the natural undulations of cut stone because of the slight dimension created by the sponging and rolling Mineral process –

If you desire a less dimensional final finish – then you may consider smoothing down your Minerals . . .

1. Allow your Minerals to dry for at least 4 hours –
2. Purchase a very fine #600 grit sand paper from a hardware store
3. Clip the sand paper into a handheld sanding block or wrap the sandpaper around a block
4. Lightly smooth an area within your arm's reach - using a back and forth motion. Not circular. You don't have to push hard. Just do a few strokes at a time around the area. After smoothing your Minerals - the finish will look dull – Don't worry because the Topcoat will bring back its original vibrancy and clarity – Don't sand your final Topcoat.

NOTE - don't use the sanding block on the edges of your countertop because it concentrates too much force. Simply use a loose piece of the #600 sandpaper in your hand - and gently smooth -



NOTE - after sanding – wipe up the sanding dust with a slightly damp cloth - and allow to dry for an hour before applying your first Topcoat.

### **Cold Weather Alert !!! Important!!!**

Due to lower outside temperatures during the winter, the temperature of your countertop is likely to be cooler than your room because of the unheated cabinet space below, and their attachment to outside walls. Colder countertop temperatures will slow down the drying times, which may adversely impact the coating.

Therefore, it's important to increase your countertop's temperature with the following steps -

- 1) Make sure your GIANI™ kit is inside your home for at least 24 hours before you start your project
- 2) Turn your heat up to 72°F the night before your start your project - and until you apply your last coat -
- 3) Open your cabinet doors to allow the heat in underneath your countertops the night before you begin.

Caution: Do not take internally. Avoid contact with eyes and skin. Use with adequate ventilation. KEEP OUT OF REACH OF CHILDREN. WARNING! If you scrape, sand or remove old house paint – you may release lead dust. Lead is toxic. Contact National Lead Information Hotline at 800-424-LEAD.

Apply 70F– 85F. **Clean with GIANI Cleaner or soft cloth, mild soap and warm water. Do not use cleaners, scrubbers or polishes.** Not for cutting, chopping, food prep. Do not set hot pans on GIANI™. 800-650-5699 [GIANIgranite.com](http://GIANIgranite.com)